



Bikkanapally- A Village Study



By
Swapnil Parihar
Nitika Pant
Ravinder Kumar
Keerthi Narayan P



The Presentation Plan

- About Bikkanapally and Kolatty Panchayat
- Our approach
- PLA experience
- The Government and the village
 - Livelihood opportunities – Issues & Suggestions
 - Service delivery – Issues & Suggestions
 - Infrastructure – Issues & Suggestions
- Lessons Learnt

About Kolatty Panchayat

- Bikkanapally
- Omandapally
- Kolatty
- Gulisandram
- Muchandhiram
- Thandaraimedu



About Bikkanapally

- Speak Kannada, study Telugu, interact in Tamil
- Famous for Large scale silk farm
- 14 kms from Denkanikota taluk
- 8 kms branch off from Anchetty-Denkanikota road
- Population - 981
- Literacy – 62% , male – 66%, female – 57%
- Caste – Vokkaligas, Baliyas, Mudaliyars, Vanniyars, Scheduled caste, 1 ST family
- Peaceful existence – no theft, no murder, no communal or caste riots

பஞ்சவர்ணம்
POST OFFICE

உள்ளே வரக்கூடாது
NO ADMISSION

WORKING H

9:30AM

12:30PM

CLEARANCE

10:00

DESPATCH

11:00

RECEIVED BAG

12:00

DESPATCH 12:30

DENKANIKOTA

500M

About Bikkanapally

- Majority red soil, rocky towards thandaraimedu
- Topography – undulating
- Major crops – Ragi, Groundnuts, Tuvarai, Horse gram, Avarai, Corn

Our Approach



- Participatory
- Triggers and listening
- Silent spectators
- Non-supervisory
- Informal talk
- FGD – individual study
- Socialising – cooking, playing, tea

PLA dynamics

- **Pre Transect walk and Transect walk**
 - Helped in planning transect walk
 - Early morning village
 - Village people – well informed
 - Comparison
 - Interdependence
 - “Jugaad” – boars, corn fencing, castor fencing
- **Timeline**
 - Not as inclusive as expected
 - Tendency to drift towards current issues
- **Resource and Social Mapping**
 - Our map and villager’s map
 - MGNREGA budget planning
 - less participatory

Year	Event
1918	Some unknown disease. People died in large numbers; migration
1922-1947	Period of bonded labour
1955	First Panchayat election, voice voting
1955	First school – upto class 5
1960	School upgraded to class 8
1965-1970	First radio; first pucca house
1967	850 acres of land acquired by Govt. for farm factory. Gulisandram village displaced.
1970	Building of first well
1973	First diesel engine
1975	Electricity and street lights
1975-1980	No panchayat elections
1987	First tractor; driver from Salem
1990	First television; first pucca road
2011	School upgraded to high school



PLA dynamics

- Seasonality
 - Star based Rain calendar
 - understanding linkages
 - NREGS Criticism
- Ranking
- Venn diagram
 - The Post Office- financial institution
 - Dynamic, consensual
- PIP – Wealth Ranking
 - Chose a small habitation for convenience
 - Awareness of economic status of neighbours
 - Upward mobility of cards (Family Data Card)
 - More people, more disagreement, better triangulation

HIGHLY VARIABLE

செயல்பாடுகள் மற்றும் செயல்பாடுகள்

செயல்பாடுகள் மற்றும் செயல்பாடுகள்

DIP

செயல்பாடுகள்

DIP

செயல்பாடுகள்

செயல்பாடுகள்

DIP

செயல்பாடுகள்



Participatory Identification of Poor Wealth Ranking



Why is agriculture not profitable?

1

- Inappropriate price for the produce
- Non-availability of agricultural labour

2

- Erratic rainfall
- Escalation in input costs

3

- Lack of information about market
- Dependence on middlemen
- No storage

4

- Rains during harvesting and threshing

Venn Diagram

1. Water tank
2. School and Anganwadi
3. Fair Price Shop
4. Post Office
5. Library
6. Bus stop
7. PVP Office
8. Silk Farm
9. Panchayat Office
10. Community Toilet



The village and the Government Livelihood Opportunities - Issues

- Agriculture
 - Less mechanisation, low yield, less profitable, lack of market info, inappropriate prices, no storage, dependence on middlemen
- Silk Farm
 - 850 acres – 60 labourers, few Inspectors
- Cattle rearing
 - No veterinary hospital; no cooperative for milk
- NREGS
 - No durable assets; low labour efficiency; no social audit; lack of supervision
- Pudhu Vaazhvu Project
 - Connectivity handicap

The village and the Government Livelihood Opportunities - Suggestions

- Agriculture
 - Better connectivity to Denkanikota, Market info through media – horticulture especially, Scheduling of NREGA Activities
- Silk Farm
 - Lease out land for agriculture- short run; distribute land
 - long run
- Cattle rearing
 - Milk SHGs
- NREGS
 - durable assets – RCC embankments; SHG building; social audit; non-interference with agri. activities
- Pudhu Vaazhvu Project
 - Share auto – improve connectivity, create role models like Srinivas

The village and the Government Service Delivery - Issues

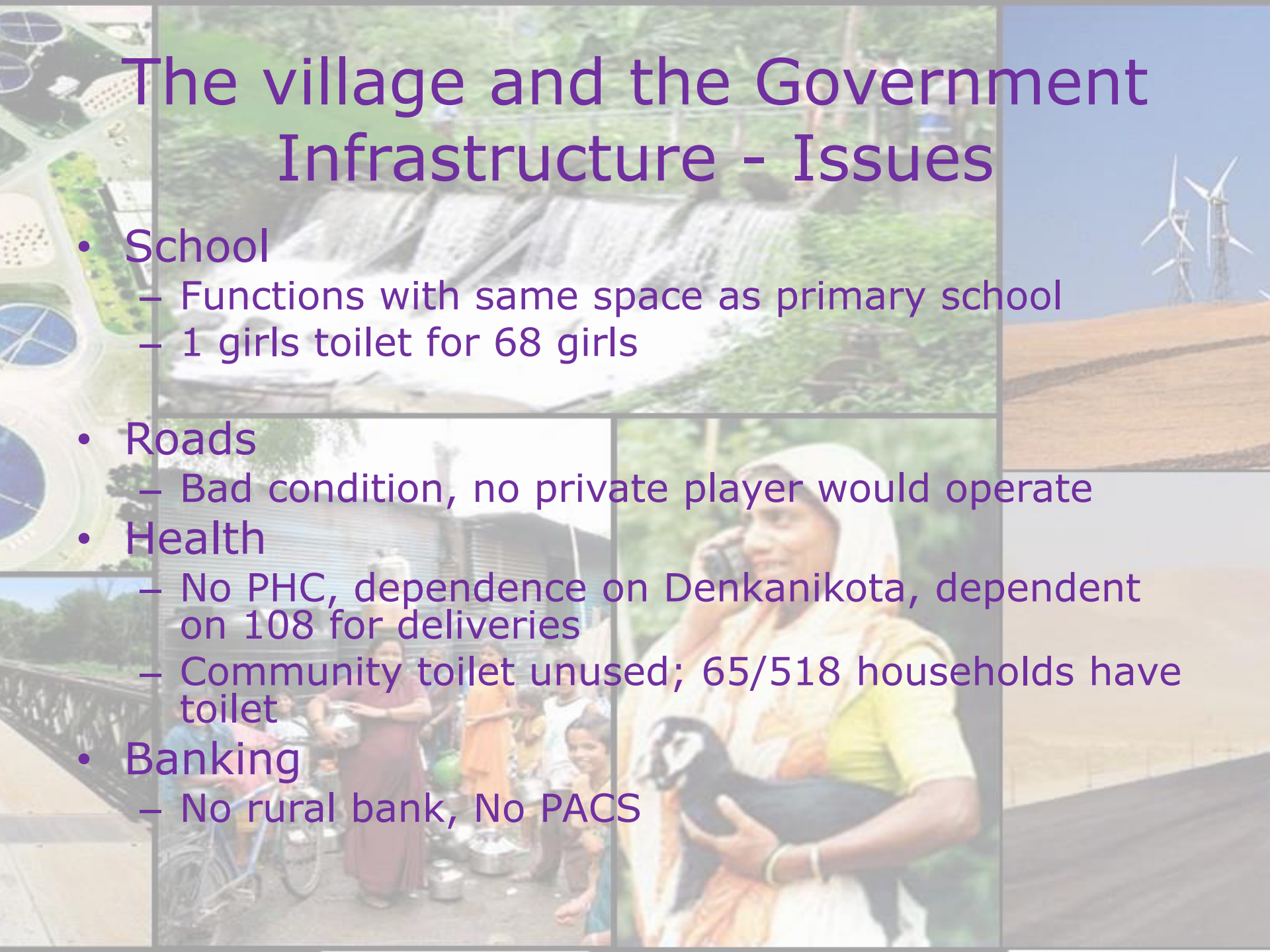
- Education:
 - No sweeper – School children cleaning
 - Teacher comes late, goes early, No HM stays
 - Girls toilet unclean
 - Garbage dumped openly near water facility
 - Telugu teacher
- Bus facility
 - Only 4 times a day
- Fair Price Shop
 - Distribution weekly or fortnightly
- Ceeta document
 - Pillar to post process

The village and the Government Service Delivery - Suggestions

- Education:
 - Improve connectivity with Denkanikota, HM stays, Teachers on time
 - Fill up vacancies – teachers, cleaners
- Bus facility
 - Increase frequency, introduce shared autos/mini bus
- Fair Price Shop
 - Distribution weekly or fortnightly
- Ceeta document
 - Monthly/ fortnightly distribution at the panchayat office

The village and the Government Infrastructure - Issues

- School
 - Functions with same space as primary school
 - 1 girls toilet for 68 girls
- Roads
 - Bad condition, no private player would operate
- Health
 - No PHC, dependence on Denkanikota, dependent on 108 for deliveries
 - Community toilet unused; 65/518 households have toilet
- Banking
 - No rural bank, No PACS



The village and the Government Infrastructure - Suggestions

- School
 - Expand school campus
 - Build more toilets and maintain
- Roads
 - Repair roads
- Health
 - Integrated PHC or atleast a subcentre
- Banking
 - Rural bank or Co-operative society, No PACS



Lessons learnt

- Connectivity as a handicap
- Judicious utilization of resources
- Peaceful coexistence of communities
- Simple and austere life
- Basic understanding of village level institutions
- Linkages between rainfall, cropping season and employment
- Villagers perspective about government
- Government activities- purpose???
- Working government employee and unwilling people-paradox
- Hospitality
- Cooking



Thank you !